

NEW HAVEN COUNTY CARS



Thank you for purchasing this New Haven County Car from Rapido Trains, Inc. As with other cars in this series, these cars have been developed in association with The New Haven Railroad Historical and Technical Association (NHRHTA).

HISTORY

The New Haven Railroad took delivery of a group of ten stainless steel baggage-lounge cars and ten baggage-parlor-lounge cars in 1948. A part of the post-war passenger train modernization, these cars were named after counties served by the New Haven. That part was simple. Now the history of these cars gets more complicated!

The initial 1948 order was delivered in four different interior configurations, but all with baggage compartment, a drawing room, a buffet, two day roomettes and a mix of parlor, table, and lounge seat arrangements. Four cars also had radio telephones.

In 1952-53 the New Haven converted a total of six cars by removing the baggage section and adding two additional drawing rooms. However, these six additional cars included no fewer than three NEW interior configurations! Cars #210-219 somehow escaped the rebuilds and retained their baggage sections throughout their service life, but all cars lost their skirts from the Fall of 1957 to the Spring 1958

The 'County' cars were some of the longest lasting New Haven stainless steel cars, some serving well into the Amtrak years.

Rapido's HO scale model covers these cars in both the original baggage variation and the later rebuilt cars with full interior details for each style in both skirted and unskirted versions as per prototype. Multiple interior parts allow modelers to customize the interior seat and table arrangements to match specific cars.

INTERIOR LIGHTING

The County car has track-powered constant interior lighting that can be turned off by using the magnetic Rapido Lighter by waving it across the roof surface in the middle of the car. The lighting works on both DC and NMRA-compliant DCC systems. Please note that the lighting board is not designed for European AC systems or "train set" DC power packs (see the support section of our website for a list of known culprits). Use of your County Car with these types of controllers may melt your car and void your warranty.

COUPLERS

Your County cars come with Rapido's own medium-length Macdonald-Cartier couplers installed from the factory, which will navigate most curves down to a 22" radius on level track. These are compatible with all major brands of knuckle couplers on the market. If your model railroad has 18" radius curves, short crossovers, or wibbly-wobbly track, we recommend replacing one of the couplers with the extra Macdonald-Cartier long-shank coupler included in the box. To replace a coupler:

1. Place the car upside-down on a soft, flat surface and use

a small Phillips screwdriver to remove the screw holding the coupler box in place. Slide the coupler box out from the end of the car.

2. Open the coupler box and remove the coupler, taking care to remember the orientation of the parts. Install the replacement coupler in the same order and orientation then snap the coupler box back together.

3. Reverse these steps to put everything back together.

TUNE-UP

All model passenger cars need to be tuned up before they hit the tracks, and with so many fiddly parts, our cars are no exception. Before you run your County Car, we recommend going through the following steps:

1. Check that all wheelsets are in gauge using a National Model Railroad Association (NMRA) RP-2 Standards Gauge. If any wheelsets are tight or loose, they can be re-gauged by gently twisting the wheels.

2. One passenger car truck should freely swivel from side-to-side, and the other should swivel both side-to-side and up-and-down. Tighten or loosen the truck screws as necessary.

3. Replace one standard-length coupler with the long-shank coupler if required for your layout.

4. Check that none of the underbody piping has been bent out of position during shipping. In most cases, it can be bent back into shape with your fingers.

5. Check the height of the coupler trip pins and bend them up if they foul your switches and crossings. We recommend using Kadee part #237 (Trip Pin Pliers) or Micro-Mark part #80600 (Trip Pin Bending Plier). The coupler heads should be at the correct height.

If after the tune up your car wobbles, check the wheelsets again. If you have any wheelsets which are not 100% true, we will replace them at no additional charge – just give us a shout.

WARRANTY

Your County Car comes with a limited lifetime warranty. If there is any factory defect we will do our best to repair or replace your model. If you damage your model, do not hesitate to call or e-mail us. We will still try and fix it for you even if the problem was "your fault." We aim for 100% customer satisfaction. Bear in mind we won't parts in stock forever, so if you are opening this for the first time in 2067, we probably won't have any parts. Sorry.

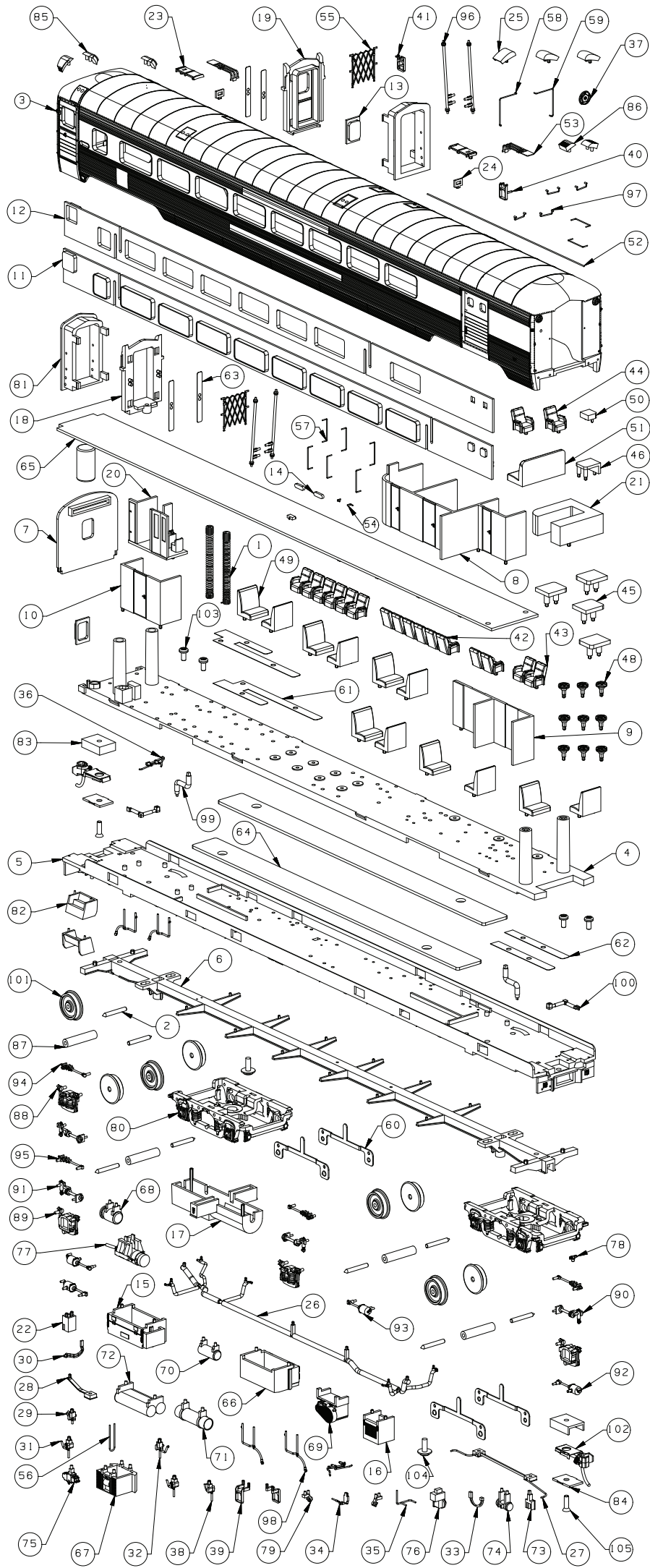
THANKS

Our County Cars would not be the amazing models they are today were it not for the generous assistance of NHRHTA and a number of people. Thank you to Rick Abramson, Paul Cutler III, Bill Dulmaine and John Sheridan.



CANADA: 500 ALDEN ROAD • UNIT 21 • MARKHAM • ONTARIO • L3R 5H5
USA: PO BOX 796 • HIGGANUM • CONNECTICUT • 06441
Tel. 905.474.3314. Fax. 905.474.3325. Visit. www.rapidotrains.com

RAPIDO



HO SCALE

NEW HAVEN
COUNTY CAR



105	SCREW 1.7X6 KB	2
104	SCREW 1.7X5 PWA KB	2
103	SCREW 1.7X3.5 PB	4
102	METAL COUPLER	2
101	17-MT001	8
100	17-08-14	2
99	17-08-13	2
98	17-08-12	4
97	17-08-11	4
96	17-08-10	4
95	17-08-09	2
94	17-08-08	2
93	17-08-07	2
92	17-08-06	2
91	17-08-05	2
90	17-08-04	2
89	17-08-03	2
88	17-08-02	2
87	17-08-01	4
86	17-05-10	2
85	17-05-07	3
84	17-05-06	2
83	17-05-05	2
82	17-05-04	2
81	17-05-02	2
80	17-05-01	2
79	17-04-16	2
78	17-04-15	1
77	17-04-13	1
76	17-04-12	1
75	17-04-11	1
74	17-04-10	1
73	17-04-09	1
72	17-04-08	1
71	17-04-07	1
70	17-04-06	1
69	17-04-05	1
68	17-04-04	1
67	17-04-03	1
66	17-04-02	1
65	134-PCB1	1
64	134-MT014	2
63	134-MT013	4
62	134-MT012	2
61	134-MT011	2
60	134-MT010	4
59	134-MT009	1
58	134-MT008	1
57	134-MT006	8
56	134-MT005	1
55	134-MT004	2
54	134-MT003	2
PC NO	PART NAME	QTY

53	134-MT002	2
52	134-MT001	1
51	134-08-13	1
50	134-08-12	1
49	134-08-08	12
48	134-08-07	10
47	134-08-06	1
46	134-08-05	1
45	134-08-04	4
44	134-08-03	2
43	134-08-02	4
42	134-08-01	2
41	134-07-16	1
40	134-07-15	1
39	134-07-14	2
38	134-07-13	2
37	134-07-12	1
36	134-07-11	2
35	134-07-10	1
34	134-07-09	1
33	134-07-08	1
32	134-07-07	2
31	134-07-06	3
30	134-07-05	1
29	134-07-04	2
28	134-07-03	1
27	134-07-02	1
26	134-07-01	1
25	134-06-12	3
24	134-06-11	2
23	134-06-10	2
22	134-06-09	1
21	134-06-08	1
20	134-06-07	1
19	134-06-05	1
18	134-06-04	1
17	134-06-03	1
16	134-06-02	1
15	134-06-01	1
14	134-05-06	2
13	134-05-05	2
12	134-05-02	1
11	134-05-01	1
10	134-04-06	1
9	134-04-05	1
8	134-04-03	1
7	134-04-02	1
6	134-04-01	1
5	134-03-01	1
4	134-02-03	1
3	134-01-01	1
2	126-MT010	8
1	124-MT013	2
PC NO	PART NAME	QTY

THIS DRAWING REPRESENTS ONLY ONE OF MANY VARIATIONS OF THE NEW HAVEN COUNTY CAR.

EFFORTS HAVE BEEN MADE TO ILLUSTRATE ALL PARTS FOUND ON THIS MODEL.

A DIGITAL VERSION OF THIS DOCUMENT, AS WELL AS ALL OTHER VERSIONS OF THE COUNTY CAR, CAN BE DOWNLOADED AT RAPIDOTRAINS.COM.

SHOULD YOU NOT BE ABLE TO LOCATE A SPECIFIC PART, PLEASE CONTACT US FOR ASSISTANCE.

